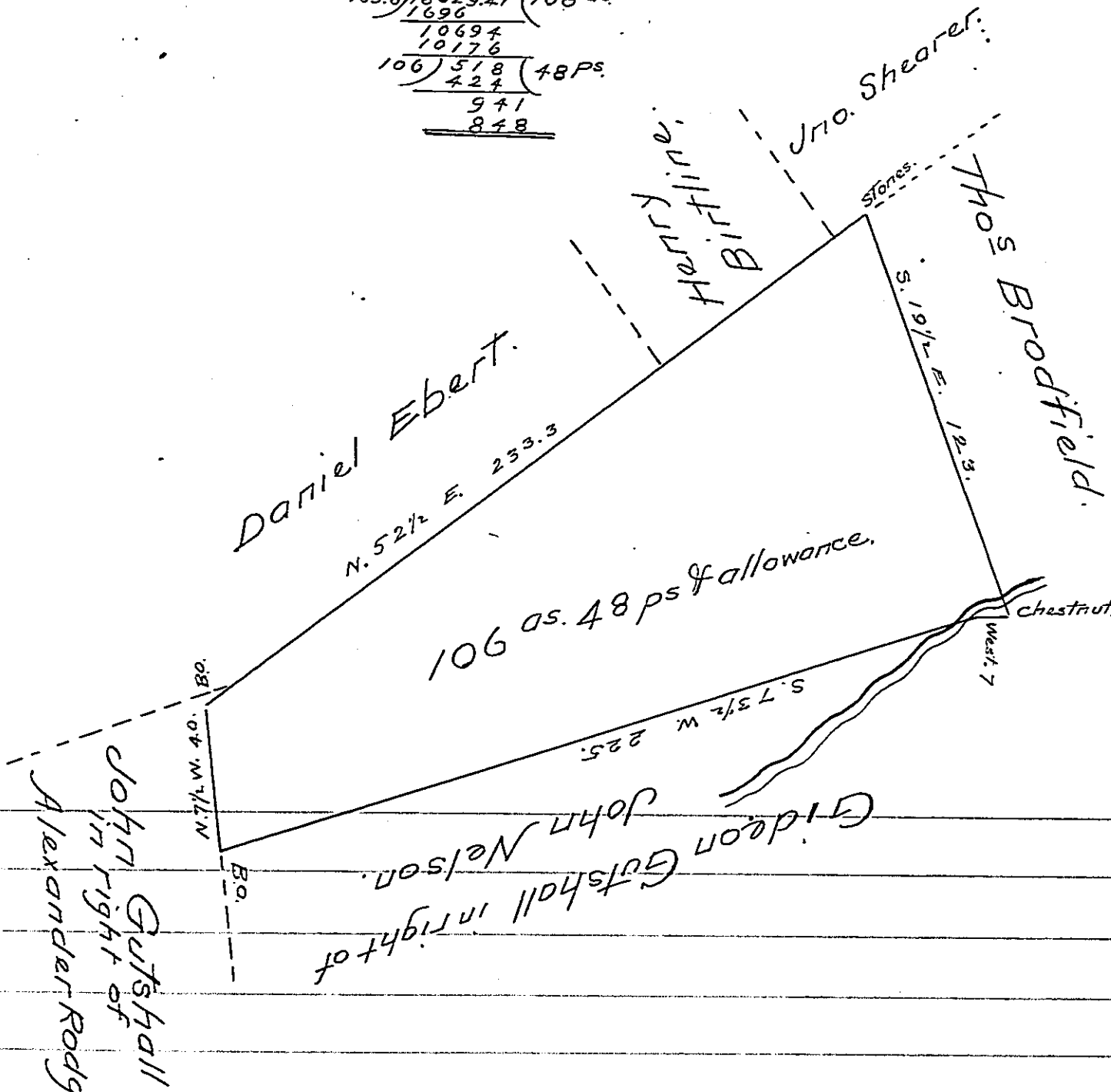


Bear. Dist. N. S. E. W. D.M.D. N.A. S.A.

West.	7.0		7.0	7.0		
S. 73 3/4 W.	225.0	66.4	214.6	228.6	15179.04	
N. 7 1/2 W.	40.0	39.7		5.2	448.4	17801.48
N. 52 1/2 E.	233.3	142.6	185.8	267.8	38188.28	
S. 19 1/2 E.	123.0	115.9	41.0	41.0	4751.96	

182.3 182.3 226.8 226.8
 55389.76 / 9930.94
 1930.94
 2) 36058.82
 169.6) 18029.41 (106 95
 1696
 10694
 10176
 106) 518 (48 Ps
 424
 94
 848



A draft of a tract of Land Contain-
 ing 106 ⁹⁵ 48 ps and allowance, situate in
 now Jackson
 Toboyne Township Perry County, Surveyed
 for Gideon Gutschall Oct- 8th 1864. in pursu-
 ance of an order granted Bartholomew Davis
 Augt. 27th 1766 for 100 ⁹⁵ No 1005.
 To James P Barr Esqr. Daniel Rife D.S.
 Surveyor General.

IN TESTIMONY that the above is a copy of the original remaining on file in
 the Department of Internal Affairs of Pennsylvania, made
 conformably to an Act of Assembly approved the 16th day of
 February, 1833, I have hereunto set my Hand and caused
 the Seal of said Department to be affixed at Harrisburg,
 this Twenty second day of December 1904.

James P Barr
 Secretary of Internal Affairs.